

# Alton Towers Resort Toilet Facilities

Alton Towers Resort, Alton, Staffordshire, ST10 4DB

01538 704 096 (tel:01538 704 096)

Visit website (<https://www.altontowers.com>)



## Access Guide

## Parking and Facilities

### Parking

- Blue Badge parking is located in the Express & Disabled Car Park only.

### Changing Places

- Changing Places are located in the following areas; outside of X-Sector (Adventure Land), in The Towers area, and between Gloomy Wood and Forbidden Valley.

### Accessible Toilet Facilities

- Accessible toilets are located in the following areas; at the main resort entrance (externally), at the top of Towers Street, in the Medical Centre, in The Towers Burger Kitchen, in the Explorer's Pizza and Pasta Buffet, in Forbidden Valley, in the Rollercoaster Restaurant and in CBeebies Land.

## Standard Toilet Facilities

- Standard toilets are located in the following areas; at the main resort entrance (externally), at the top of Towers Street, in Mutiny Bay, in the Explorer's Pizza and Pasta Buffet, in Gloomy Wood, in Forbidden Valley, in The Towers area, in The Towers Burger Kitchen, in the Rollercoaster Restaurant, outside of X-Sector (Adventure Land) and in CBeebies Land.
- Baby change facilities are located in the following areas; at the main resort entrance (externally), at the top of Towers Street, in Mutiny Bay, in the Explorer's Pizza and Pasta Buffet, in Gloomy Wood, in Forbidden Valley, in The Towers area, in The Towers Burger Kitchen, in the Rollercoaster Restaurant, outside of X-Sector (Adventure Land) and in CBeebies Land.

## Additional Guest Information

- The guest information point is located in No.1 Towers Street.
- The medical centre is located between Towers Street and Mutiny Bay.

## Summary

- There are multiple toilets available around the theme park.
- Please note, there will be slight and steep slopes between each area of the theme park.

## Accessible Toilet(s) (Main Resort Entrance - Outside - Right Transfer)

### Photos



1



2



3



4



5

- 
- There is an/are accessible toilet(s) available.

### **Location and Access**

- This accessible toilet is located to the right as you face the Main Resort Entrance.
- This accessible toilet is approximately 15m (16yd 1ft) from the Main Resort Entrance.
- There is ramped/sloped access into the accessible toilet.
- This is a shared toilet.
- A key is not required for the accessible toilet.
- There is pictorial and written text signage on or near the toilet door.
- The contrast between the external door and wall is poor.
- The door opens outwards.
- The door may be difficult to open.
- The door is locked by a twist lock.
- The width of the accessible toilet opening is 86cm (2ft 10in).
- The contrast between the internal door and wall is poor.
- The door has a horizontal grab rail.
- The contrast between the horizontal grab rail and internal door is good.

### **Toilet Features**

- The dimensions of the accessible toilet are 136cm x 200cm (4ft 6in x 6ft 7in).
- The accessible toilet does not have an unobstructed minimum turning space of 150cm x 150cm.
- The lighting levels are moderate to good.
- There is a lateral transfer space.
- As you face the toilet pan the transfer space is on the right.
- The lateral transfer space is 78cm (2ft 7in).
- The transfer space is obstructed by a sanitary bin.
- There is a flush on the transfer side.
- There is a spatula type lever flush.
- There is a dropdown rail on the transfer side.
- The contrast between the dropdown rail(s) and wall is good.
- There is a/are wall-mounted grab rail(s) available.

- As you face the toilet the wall-mounted grab rail(s) is/are on both sides.
- There is a vertical wall-mounted grab rail on the transfer side.
- There is a horizontal wall-mounted grab rail on the opposite side of the seat to the transfer space.
- The contrast between the wall-mounted grab rail(s) and wall is good.
- The contrast between the walls and floor is good.
- There is an emergency alarm.
- The emergency pull cord alarm is fully functional.
- There is not a red flashing fire alarm beacon within the toilet.
- Disposal facilities are available in the toilet.
- There is a/are sanitary and general waste (with no lid) disposal units.
- There is not a/are not coat hook(s).

### **Additional Fixtures**

- There is not a mirror.
- There is not a shelf within the accessible toilet.
- The toilet has a cistern.
- The height of the toilet seat above floor level is 48cm (1ft 7in).
- The toilet seat colour contrast is good.
- There is a toilet roll holder.
- The toilet roll holder can be reached from seated on the toilet.
- The toilet roll holder is not placed higher than 100cm (3ft 3in).
- The contrast between the toilet roll holder and the wall is poor.
- There is a wash basin.
- The wash basin and tap(s) can be reached from seated on the toilet.
- The wash basin is not placed higher than 74cm (2ft 5in).
- There are vertical wall-mounted grab rails on both sides of the wash basin.
- The contrast between the wash basin wall-mounted grab rail(s) and wall is good.
- The wash basin tap type is lever mixer.
- There is a wall fixed soap dispenser.
- The soap dispenser can be reached from seated on the toilet.
- The height of the soap dispenser is 92cm.
- There is not a towel dispenser.

- There is a hand dryer.
- The hand dryer is not placed higher than 100cm (3ft 3in).
- The contrast between the hand dryer and the wall is poor.

## Standard Toilet(s) (Main Resort Entrance - Outside)

### Photos



1



2



3



4



5



6

- 
- Standard toilet facilities are available.

### Toilet Facilities

- The female and male toilets are located to the right as you face the Main Resort Entrance.
- There is ramped/sloped access into the toilet(s).
- The standard toilet(s) is/are approximately 30m from the Main Resort Entrance.
- The colour contrast between the external toilet door(s) and wall(s) is poor.
- There is written text signage on or near the toilet door.
- An ambulant toilet cubicle is not available.
- The height of the wash basin(s) is 83cm.
- The wash basin(s) tap type is push.

- Lighting levels are moderate to good.

## Parent and Baby Room (Main Resort Entrance - Outside)

### Photos



1



2

- 
- The parent and baby room is located to the right as you face the Main Resort Entrance, between the standard toilets.
  - The parent and baby room is approximately 30m from the Main Resort Entrance.
  - There is ramped/sloped access into the parent and baby room.
  - Staff do not need to be notified for use of the room.
  - There is written text signage on or near the parent and baby room door.
  - The baby change table is not set against the wall, permanently fixed at 75cm from the floor.
  - The baby change table is not height adjustable.
  - The height of the baby change table once extended is 92cm (3ft).
  - There are disposal facilities in the parent and baby room.
  - There is a wash basin in the parent and baby room.
  - The height of the wash basin is 79cm.
  - The wash basin tap type is push.
  - There is a/are chair(s) in the parent and baby room.
  - There is not a chair with armrests on both sides.
  - There is not a toilet in the parent and baby room.
  - The lighting levels are good.

## Changing Places (Towers Street)

### Photos



1



2



3



4



5



6



7



8



9



10



11



12

## Location and Access

- The facility is located to the right as you enter through the main resort entrance.
- The facility is approximately 10m (10yd 2ft) from the main resort entrance.
- The facility is in addition to standard and accessible toilets.
- The facility is located close to other managed facilities (e.g. reception or service counter).
- There is ramped/sloped access into the facility.
- The facility surveyed is for the sole use of disabled people.
- The colour contrast between the external door and wall is good.
- The colour contrast between the internal door and wall is poor.
- You do need a key for the facility.
- The key is a radar key.
- The key can be obtained from Guest Services.
- There is not a sign at the entrance to the Changing Places facility indicating the location of the nearest toilets and baby changing facilities.

- The door opens outwards.
- The door is easy to open.
- The door is locked by a locking handle.
- The door has a horizontal grab rail.
- The width of the door is 100cm (3ft 3in).
- The dimensions of the facility are 314cm x 400cm.
- The ceiling height is not at a minimum of 2.4m.
- There is a clear 200cm x 180cm manoeuvring space in the facility.
- The facility has a non-slip floor.
- The colour contrast between the walls and floor is good.

### **Toilet Details**

- The facility toilet has a transfer space on both sides.
- The transfer space on the right as you face the toilet is 85cm (2ft 9in).
- The transfer space on the left as you face the toilet is 182cm (5ft 12in).
- Dropdown rails are provided.
- As you face the toilet the dropdown rail(s) is/are on both sides.
- The colour contrast between the dropdown rail(s) and wall is fair.
- As you face the toilet there are vertical grab rails on both sides.
- The colour contrast between the wall-mounted grab rails to the left of the toilet and wall is good.
- The colour contrast between the wall-mounted grab rails to the right of the toilet and wall is good.
- The height of the toilet seat above floor level is 48cm (1ft 7in).
- There is a spatula flush.
- There is a toilet roll holder.
- The height of the toilet roll holder is 80cm.
- The toilet has a cistern.
- The toilet seat colour contrast is good.
- There is an emergency alarm for the toilet.
- The emergency pull cord alarm is within reach and fully functional.

### **Changing Bench and Hoist Details**

- The facility changing bench is wall mounted.



- The facility changing bench height is adjustable.
- The length of the facility changing bench is 186cm (6ft 1in).
- The facility hoist is powered overhead.
- The overhead hoist covers all areas in the cubicle.

### **Shower Details**

- There is not a shower unit with a detachable shower head.

### **Other Facilities**

- A privacy screen is available.
- The type of wash basin is adjustable.
- The wash basin tap type is lever.
- There is a mixer tap.
- Wall mounted grab rails are available at the wash basin.
- As you face the wash basin, the wall mounted grab rails are on both sides.
- The colour contrast between the wash basin grab rail(s) and wall is good.
- There is a soap dispenser.
- The soap dispenser is not at the recommended height of 80cm-100cm.
- The height of the soap dispenser is 118cm.
- Wide tear off paper roll is available.
- The wide paper roll dispenser is not at the recommended height of 80cm-100cm.
- The height of the wide paper roll dispenser is 107cm.
- There is a hand dryer.
- The hand dryer is at the recommended height of 80cm-100cm.
- The height of the hand dryer is 90cm.
- There is not a towel dispenser.
- There is a mirror.
- The mirror is placed at a lower level or at an angle for ease of use.
- There is a/are female sanitary and non-infectious waste disposal units.
- There is an emergency alarm for the facility.
- The emergency pull cord alarm is within reach and fully functional.
- There is not a coat hook.

- There is not a flashing fire alarm beacon within the toilet.
- The lighting levels are moderate to good.

## Standard Toilet(s) (Towers Street)

### Photos



1



2



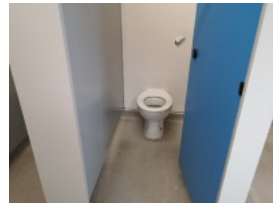
3



4



5



6



7



8



9



10

- Standard toilet facilities are available.

### Toilet Facilities

- The female and male toilets are located to the right as you enter the Main Resort Entrance.
- There is ramped/sloped access into the toilet(s).
- The colour contrast between the external toilet door(s) and wall(s) is good.
- There is written text signage on or near the toilet door.
- An ambulant toilet cubicle is not available.

- The height of the wash basin(s) is 85cm.
- The wash basin(s) tap type is push.
- Lighting levels are good.
- Lowered urinals are available in the male standard toilets.

## Parent and Baby Room (Towers Street)

### Photos



1



2



3



4

- 
- There is a parent and baby room for public use.
  - The parent and baby room is located to the right as you enter the Main Resort Entrance, at the top of Towers Street.
  - There is ramped/sloped access into the parent and baby room.
  - Staff do not need to be notified for use of the room.
  - There is written text signage on or near the parent and baby room door.
  - The baby change table is not set against the wall, permanently fixed at 75cm from the floor.
  - The baby change table is not height adjustable.
  - The height of the baby change table once extended is 90cm (2ft 11in).
  - There are disposal facilities in the parent and baby room.
  - There is a wash basin in the parent and baby room.
  - The height of the wash basin is 80cm.
  - The wash basin tap type is push.
  - There is a/are chair(s) in the parent and baby room.
  - There is not a chair with armrests on both sides.
  - There is not a toilet in the parent and baby room.
  - There is not a flashing fire alarm beacon within the room.
  - The lighting levels are moderate to good.

# Accessible Toilet(s) (Medical Centre - No Transfer)

## Photos



1



2

- There is an/are accessible toilet(s) available.

## Location and Access

- This accessible toilet is located at the rear of the corridor, ahead as you enter the main entrance.
- This accessible toilet is approximately 6m (6yd 1ft) from the main entrance.
- There is step-free access into the accessible toilet.
- This is a shared toilet.
- A key is not required for the accessible toilet.
- There is pictorial signage on or near the toilet door.
- The contrast between the external door and wall is good.
- The door opens outwards.
- The door is easy to open.
- The door is locked by a sliding bolt.
- The width of the accessible toilet opening is 95cm (3ft 1in).
- The contrast between the internal door and wall is good.
- The door does not have a horizontal grab rail.

## Toilet Features

- The dimensions of the accessible toilet are 126cm x 256cm (4ft 2in x 8ft 5in).
- The accessible toilet does not have an unobstructed minimum turning space of 150cm x 150cm.
- The lighting levels are moderate to good.
- There is not a lateral transfer space.

- There is not a spatula type lever flush.
- There is a push button flush.
- There are dropdown rails on both sides of the toilet.
- The contrast between the dropdown rail(s) and wall is poor.
- There is not a/are not wall-mounted grab rail(s) available.
- The contrast between the walls and floor is good.
- There is an emergency alarm.
- The emergency pull cord alarm was out of reach (higher than 10cm (4") from floor) when surveyed.
- There is a red flashing fire alarm beacon within the toilet.
- Disposal facilities are available in the toilet.
- There is a/are sanitary and general waste (with lid) disposal units.
- There is not a/are not coat hook(s).

#### **Additional Fixtures**

- There is not a mirror.
- There is not a shelf within the accessible toilet.
- The toilet has a cistern.
- The height of the toilet seat above floor level is 48cm (1ft 7in).
- The toilet seat colour contrast is poor.
- There is a toilet roll holder.
- The toilet roll holder can be reached from seated on the toilet.
- The toilet roll holder is not placed higher than 100cm (3ft 3in).
- The height of the toilet roll holder is 74cm (2ft 5in).
- The contrast between the toilet roll holder and the wall is poor.
- There is a wash basin.
- The wash basin and tap(s) cannot be reached from seated on the toilet.
- The wash basin is placed higher than 74cm (2ft 5in).
- The height of the wash basin is 80cm (2ft 7in).
- There are no vertical wall-mounted grab rails at the wash basin.
- The wash basin tap type is lever mixer.
- There is a wall fixed soap dispenser.
- The soap dispenser cannot be reached from seated on the toilet.

- The height of the soap dispenser is 110cm.
- There is a towel dispenser.
- The towel dispenser cannot be reached from seated on the toilet.
- The towel dispenser is placed higher than 100cm (3ft 3in).
- The height of the towel dispenser is 130cm (4ft 3in).
- The contrast between the towel dispenser and the wall is good.
- There is not a hand dryer.

### Accessible Shower

- The shower does have an unobstructed minimum 150cm x 150cm turning space.
- There is a shower unit with a detachable shower head.
- The shower head is height adjustable.
- The adjustable shower head can be placed between 105cm and 185cm when mounted.
- A shower chair is available.
- The seat/chair is not height adjustable.
- There are not horizontal and/or dropdown rails available on both sides of the shower seat.
- The colour contrast between the shower rails and wall is poor.
- There is not a vertical grab rail for the shower.
- There is not an emergency alarm for the shower.

## Standard Toilet(s) (Mutiny Bay)

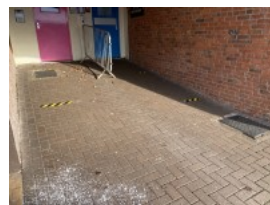
### Photos



1



2



3



4



5



6



7



8



9



10



11



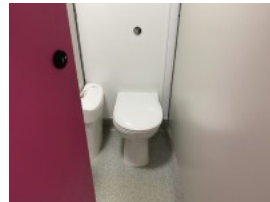
12



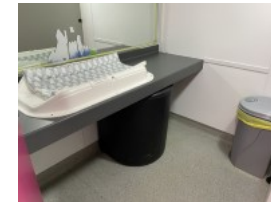
13



14



15



16

- Standard toilet facilities are available.

### Toilet Facilities

- The female and male toilets are located in Mutiny Bay.
- There is step-free access into the toilet(s).
- The colour contrast between the external toilet door(s) and wall(s) is good.
- There is pictorial and written text signage on or near the toilet door.
- An ambulant toilet cubicle is available.
- There is a/are horizontal wall mounted rail(s) on the right as you face the toilet.
- The ambulant toilet does not have vertical wall mounted grab rails.
- There is a/are dropdown rail(s) on the left as you face the ambulant toilet(s).
- The information above relates to the male toilet. There is a different configuration of rails in the female toilet.
- The height of the wash basin(s) is 84cm.

- The wash basin(s) tap type is lever.
- Lighting levels are moderate to good.
- There are push taps at the main communal wash basins.

### Baby Changing Facilities

- Baby change facilities are available in the female toilets.
- There is a fixed baby change table available.
- The height of the baby change table is 100cm.

### Comments

- There are two access points into the standard toilets; one from the main area and one from within the Welcom-Inn courtyard.
- There is level access from the main area into the toilets.
- There is a steep slope leading to the toilets from the undercover seating area (Welcom-Inn courtyard).

## Accessible Toilet(s) (Explorer's Pizza and Pasta Buffet)

### Photos



1



2



3



4



5



6



7

- There is an/are accessible toilet(s) available.

### Location and Access



- This accessible toilet is located to the left as you enter the main entrance.
- This accessible toilet is approximately 13m (14yd 8in) from the main entrance.
- There is step-free access into the accessible toilet.
- This is a shared toilet.
- A key is not required for the accessible toilet.
- There is pictorial signage on or near the toilet door.
- The contrast between the external door and wall is good.
- The door opens outwards.
- The door is easy to open.
- The door is locked by a sliding bolt.
- The width of the accessible toilet opening is 95cm (3ft 1in).
- The contrast between the internal door and wall is good.
- The door has a horizontal grab rail.
- The contrast between the horizontal grab rail and internal door is fair.

### **Toilet Features**

- The dimensions of the accessible toilet are 164cm x 230cm (5ft 5in x 7ft 7in).
- The accessible toilet does have an unobstructed minimum turning space of 150cm x 150cm.
- The lighting levels are good.
- There is a lateral transfer space.
- As you face the toilet pan the transfer space is on the left.
- The lateral transfer space is 99cm (3ft 3in).
- There is a flush, however it is not on the transfer side.
- There is not a spatula type lever flush.
- There is a lever flush.
- There is a dropdown rail on the transfer side.
- The contrast between the dropdown rail(s) and wall is good.
- There is a/are wall-mounted grab rail(s) available.
- As you face the toilet the wall-mounted grab rail(s) is/are on both sides.
- There is a vertical wall-mounted grab rail on the transfer side.
- There is a horizontal wall-mounted grab rail on the opposite side of the seat to the transfer space.

- The contrast between the wall-mounted grab rail(s) and wall is good.
- The contrast between the walls and floor is good.
- There is an emergency alarm.
- The emergency pull cord alarm was out of reach (higher than 10cm (4") from floor) when surveyed.
- There is a red flashing fire alarm beacon within the toilet.
- Disposal facilities are available in the toilet.
- There is a/are sanitary, nappy/incontinence items bin, general waste (with lid) and pedal bin disposal units.
- There is not a/are not coat hook(s).

### **Additional Fixtures**

- There is a mirror.
- The mirror is not placed at a lower level or at an angle for ease of use.
- There is not a shelf within the accessible toilet.
- The toilet has a cistern.
- The height of the toilet seat above floor level is 48cm (1ft 7in).
- The toilet seat colour contrast is good.
- There is a toilet roll holder.
- The toilet roll holder can be reached from seated on the toilet.
- The toilet roll holder is placed higher than 100cm (3ft 3in).
- The height of the toilet roll holder is 109cm (3ft 7in).
- The contrast between the toilet roll holder and the wall is poor.
- There is a wash basin.
- The wash basin and tap(s) can be reached from seated on the toilet.
- The wash basin is not placed higher than 74cm (2ft 5in).
- The height of the wash basin is 74cm (2ft 5in).
- There are vertical wall-mounted grab rails on both sides of the wash basin.
- The contrast between the wash basin wall-mounted grab rail(s) and wall is good.
- The wash basin tap type is lever mixer.
- There is a wall fixed soap dispenser.
- The soap dispenser cannot be reached from seated on the toilet.
- The height of the soap dispenser is 100cm.
- There is not a towel dispenser.

- There is a hand dryer.
- The hand dryer is not placed higher than 100cm (3ft 3in).
- The height of the hand dryer is 85cm (2ft 9in).
- The contrast between the hand dryer and the wall is poor.

### Baby Changing Facilities

- Baby changing facilities are located within the accessible toilet.
- There is a flip down baby change table available.
- The height of the baby change table is 94cm.

## Standard Toilet(s) (Explorer's Pizza and Pasta Buffet)

### Photos



1



2

- Standard toilet facilities are available.

### Toilet Facilities

- The shared toilet is located to your left as you enter the main entrance.
- There is step-free access into the toilet(s).
- The standard toilet(s) is/are approximately 12m from the main entrance.
- The colour contrast between the external toilet door(s) and wall(s) is good.
- There is pictorial signage on or near the toilet door.
- An ambulant toilet cubicle is not available.
- The height of the wash basin(s) is 83cm.
- The wash basin(s) tap type is push.

- Lighting levels are good.

## Standard Toilet(s) (Gloomy Wood)

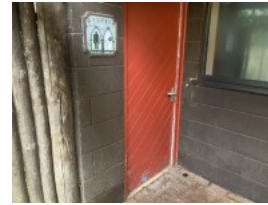
### Photos



1



2



3



4



5



6



7



8

- Standard toilet facilities are available.

### Toilet Facilities

- The female and male toilets are located in Gloomy Wood, to the side of SPOOKS R US.
- There is ramped/sloped access into the toilet(s).
- The colour contrast between the external toilet door(s) and wall(s) is good.
- There is pictorial and written text signage on or near the toilet door.
- An ambulant toilet cubicle is not available.
- The wash basin(s) tap type is push.
- Lighting levels are moderate to good.

### Baby Changing Facilities

- Baby change facilities are available in both the female and male toilets.
- There is a fixed baby change table available.

- The height of the baby change table is 100cm.

## Comments

- There are two access points for the standard toilets; one in the main area and one on route to Forbidden Valley.

## Accessible Toilet(s) (CBeebies Land - Rear - Female - Left Hand Transfer)

### Photos



1



2



3



4



5



6

- 
- There is an/are accessible toilet(s) available.

## Location and Access

- This accessible toilet is located to the rear of CBeebies Land.
- There is ramped/sloped access into the accessible toilet.
- This is a female toilet.
- A key is not required for the accessible toilet.
- There is pictorial and written text signage on or near the toilet door.
- The contrast between the external door and wall is good.
- The door opens outwards.
- The door may be difficult to open.
- The door is locked by a twist lock.

- The width of the accessible toilet opening is 85cm (2ft 9in).
- The contrast between the internal door and wall is good.
- The door has a horizontal grab rail.
- The contrast between the horizontal grab rail and internal door is poor.

### **Toilet Features**

- The dimensions of the accessible toilet are 175cm x 210cm (5ft 9in x 6ft 11in).
- The accessible toilet does have an unobstructed minimum turning space of 150cm x 150cm.
- The lighting levels are low to moderate.
- There is a lateral transfer space.
- As you face the toilet pan the transfer space is on the left.
- The lateral transfer space is 125cm (4ft 1in).
- There is a flush on the transfer side.
- There is a spatula type lever flush.
- There is a dropdown rail on the transfer side.
- The contrast between the dropdown rail(s) and wall is good.
- There is a/are wall-mounted grab rail(s) available.
- As you face the toilet the wall-mounted grab rail(s) is/are on both sides.
- There is a vertical wall-mounted grab rail on the transfer side.
- There is a horizontal wall-mounted grab rail on the opposite side of the seat to the transfer space.
- The contrast between the wall-mounted grab rail(s) and wall is good.
- The contrast between the walls and floor is good.
- There is an emergency alarm.
- The emergency pull cord alarm is fully functional.
- There is a red flashing fire alarm beacon within the toilet.
- Disposal facilities are available in the toilet.
- There is a/are sanitary and nappy/incontinence items bin disposal units.
- There is a/are coat hook(s).
- The height of the coat hook is 116cm from the floor.

### **Additional Fixtures**

- There is a mirror.

- The mirror is not placed at a lower level or at an angle for ease of use.
- There is not a shelf within the accessible toilet.
- The toilet has a cistern.
- There is a lid attached to the toilet seat.
- The height of the toilet seat above floor level is 48cm (1ft 7in).
- The toilet seat colour contrast is good.
- There is a toilet roll holder.
- The toilet roll holder can be reached from seated on the toilet.
- The toilet roll holder is not placed higher than 100cm (3ft 3in).
- The height of the toilet roll holder is 98cm (3ft 3in).
- The contrast between the toilet roll holder and the wall is good.
- There is a wash basin.
- The wash basin and tap(s) can be reached from seated on the toilet.
- The wash basin is not placed higher than 74cm (2ft 5in).
- There are vertical wall-mounted grab rails on both sides of the wash basin.
- The contrast between the wash basin wall-mounted grab rail(s) and wall is good.
- The wash basin tap type is sensor.
- There is a wall fixed soap dispenser.
- The soap dispenser can be reached from seated on the toilet.
- The height of the soap dispenser is 100cm.
- There is not a towel dispenser.
- There is a hand dryer.
- The hand dryer is not placed higher than 100cm (3ft 3in).
- The contrast between the hand dryer and the wall is poor.

## Accessible Toilet(s) (CBeebies Land - Rear - Male - Right Hand Transfer)

### Photos





- There is an/are accessible toilet(s) available.

### Location and Access

- This accessible toilet is located to the rear of CBeebies Land.
- There is ramped/sloped access into the accessible toilet.
- This is a male toilet.
- A key is not required for the accessible toilet.
- There is pictorial and written text signage on or near the toilet door.
- The contrast between the external door and wall is good.
- The door opens outwards.
- The door may be difficult to open.
- The door is locked by a twist lock.
- The width of the accessible toilet opening is 85cm (2ft 9in).
- The contrast between the internal door and wall is good.
- The door has a horizontal grab rail.
- The contrast between the horizontal grab rail and internal door is poor.

### Toilet Features

- The dimensions of the accessible toilet are 180cm x 210cm (5ft 11in x 6ft 11in).
- The accessible toilet does have an unobstructed minimum turning space of 150cm x 150cm.
- The lighting levels are low to moderate.
- There is a lateral transfer space.
- As you face the toilet pan the transfer space is on the right.
- The lateral transfer space is 130cm (4ft 3in).



- There is a flush on the transfer side.
- There is a spatula type lever flush.
- There is a dropdown rail on the transfer side.
- The contrast between the dropdown rail(s) and wall is good.
- There is a/are wall-mounted grab rail(s) available.
- As you face the toilet the wall-mounted grab rail(s) is/are on both sides.
- There is a vertical wall-mounted grab rail on the transfer side.
- There is a horizontal wall-mounted grab rail on the opposite side of the seat to the transfer space.
- The contrast between the wall-mounted grab rail(s) and wall is good.
- The contrast between the walls and floor is good.
- There is an emergency alarm.
- The emergency pull cord alarm is fully functional.
- There is a red flashing fire alarm beacon within the toilet.
- Disposal facilities are available in the toilet.
- There is a/are nappy/incontinence items bin disposal units.
- There is not a/are not coat hook(s).

### **Additional Fixtures**

- There is a mirror.
- The mirror is not placed at a lower level or at an angle for ease of use.
- There is not a shelf within the accessible toilet.
- The toilet has a cistern.
- There is a lid attached to the toilet seat.
- The height of the toilet seat above floor level is 48cm (1ft 7in).
- The toilet seat colour contrast is good.
- There is a toilet roll holder.
- The toilet roll holder can be reached from seated on the toilet.
- The toilet roll holder is not placed higher than 100cm (3ft 3in).
- The height of the toilet roll holder is 98cm (3ft 3in).
- The contrast between the toilet roll holder and the wall is good.
- There is a wash basin.
- The wash basin and tap(s) can be reached from seated on the toilet.

- The wash basin is not placed higher than 74cm (2ft 5in).
- There are vertical wall-mounted grab rails on both sides of the wash basin.
- The contrast between the wash basin wall-mounted grab rail(s) and wall is good.
- The wash basin tap type is sensor.
- There is a wall fixed soap dispenser.
- The soap dispenser can be reached from seated on the toilet.
- The height of the soap dispenser is 100cm.
- There is not a towel dispenser.
- There is a hand dryer.
- The hand dryer is not placed higher than 100cm (3ft 3in).
- The contrast between the hand dryer and the wall is poor.

## Accessible Toilet(s) (CBeebies Land - Rear - Shared - Left Hand Transfer)

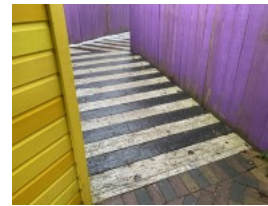
### Photos



1



2



3



4



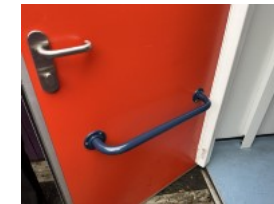
5



6



7



8

- There is an/are accessible toilet(s) available.

### Location and Access

- This accessible toilet is located to the rear of CBeebies Land.
- There is ramped/sloped access into the accessible toilet.

- This is a shared toilet.
- A key is not required for the accessible toilet.
- There is pictorial and written text signage on or near the toilet door.
- The contrast between the external door and wall is poor.
- The door opens outwards.
- The door may be difficult to open.
- The door is locked by a twist lock.
- The width of the accessible toilet opening is 82cm (2ft 8in).
- The contrast between the internal door and wall is good.
- The door has a horizontal grab rail.
- The contrast between the horizontal grab rail and internal door is good.

### **Toilet Features**

- The dimensions of the accessible toilet are 150cm x 296cm (4ft 11in x 9ft 9in).
- The accessible toilet does have an unobstructed minimum turning space of 150cm x 150cm.
- The lighting levels are moderate to good.
- There is a lateral transfer space.
- As you face the toilet pan the transfer space is on the left.
- The lateral transfer space is 80cm (2ft 7in).
- There is a flush on the transfer side.
- There is a spatula type lever flush.
- There is a dropdown rail on the transfer side.
- The contrast between the dropdown rail(s) and wall is good.
- There is a/are wall-mounted grab rail(s) available.
- As you face the toilet the wall-mounted grab rail(s) is/are on both sides.
- There is a vertical wall-mounted grab rail on the transfer side.
- There is a horizontal wall-mounted grab rail on the opposite side of the seat to the transfer space.
- The contrast between the wall-mounted grab rail(s) and wall is good.
- The contrast between the walls and floor is good.
- There is an emergency alarm.
- The emergency pull cord alarm is fully functional.
- There is not a red flashing fire alarm beacon within the toilet.

- Disposal facilities are available in the toilet.
- There is a/are sanitary, nappy/incontinence items bin and general waste (with no lid) disposal units.
- There is a/are coat hook(s).
- The height of the coat hook is 113cm from the floor.

### **Additional Fixtures**

- There is a mirror.
- The mirror is not placed at a lower level or at an angle for ease of use.
- There is not a shelf within the accessible toilet.
- The toilet has a cistern.
- There is a lid attached to the toilet seat.
- The height of the toilet seat above floor level is 48cm (1ft 7in).
- The toilet seat colour contrast is good.
- There is a toilet roll holder.
- The toilet roll holder can be reached from seated on the toilet.
- The toilet roll holder is not placed higher than 100cm (3ft 3in).
- The contrast between the toilet roll holder and the wall is poor.
- There is a wash basin.
- The wash basin and tap(s) can be reached from seated on the toilet.
- The wash basin is not placed higher than 74cm (2ft 5in).
- There are vertical wall-mounted grab rails on both sides of the wash basin.
- The contrast between the wash basin wall-mounted grab rail(s) and wall is good.
- The wash basin tap type is lever mixer.
- There is a wall fixed soap dispenser.
- The soap dispenser cannot be reached from seated on the toilet.
- The height of the soap dispenser is 117cm.
- There is a towel dispenser.
- The towel dispenser cannot be reached from seated on the toilet.
- The towel dispenser is not placed higher than 100cm (3ft 3in).
- The contrast between the towel dispenser and the wall is poor.
- There is not a hand dryer.

## Baby Changing Facilities

- Baby changing facilities are located within the accessible toilet.
- There is a flip down baby change table available.
- The height of the baby change table is 86cm.

## Comments

- The walkway leading to the toilets narrows to 108cm in places.

## Standard Toilet(s) (CBeebies Land - Rear)

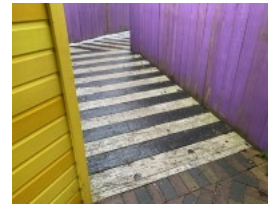
### Photos



1



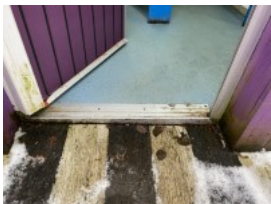
2



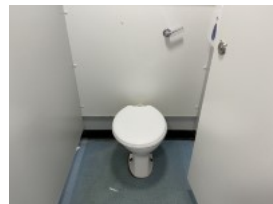
3



4



5



6



7



8



9



10

- 
- Standard toilet facilities are available.

## Toilet Facilities

- The female and male toilets are located to the rear of CBeebies Land.
- There is ramped/sloped access into the toilet(s).
- The colour contrast between the external toilet door(s) and wall(s) is poor.
- There is pictorial and written text signage on or near the toilet door.
- An ambulant toilet cubicle is not available.
- The wash basin(s) tap type is push.
- Lighting levels are moderate to good.
- There is a 5cm lip leading into the toilets.

### Comments

- The walkway leading to the toilets narrows to 108cm in places.

## Parent and Baby Room (CBeebies Land - Rear - Baby Change)

### Photos



1



2



3



4

- The parent and baby room is located at the rear of CBeebies Land.
- There is ramped/sloped access into the parent and baby room.
- Staff do not need to be notified for use of the room.
- There is pictorial and written text signage on or near the parent and baby room door.
- The baby change table is not set against the wall, permanently fixed at 75cm from the floor.
- The baby change table is not height adjustable.
- The height of the baby change table once extended is 90cm (2ft 11in).
- There are disposal facilities in the parent and baby room.
- There is a wash basin in the parent and baby room.
- The height of the wash basin is 80cm.

- The wash basin tap type is sensor.
- There is/are not chair(s) in the parent and baby room.
- There is not a toilet in the parent and baby room.
- There is not a flashing fire alarm beacon within the room.
- The lighting levels are moderate to good.

## Parent and Baby Room (CBeebies Land - Rear - Adult and Baby Change)

### Photos



1



2



3



4

- 
- The parent and baby room is located at the rear of CBeebies Land.
  - There is ramped/sloped access into the parent and baby room.
  - Staff do not need to be notified for use of the room.
  - There is pictorial and written text signage on or near the parent and baby room door.
  - The baby change table is not set against the wall, permanently fixed at 75cm from the floor.
  - The baby change table is not height adjustable.
  - The height of the baby change table once extended is 98cm (3ft 3in).
  - There are disposal facilities in the parent and baby room.
  - There is a wash basin in the parent and baby room.
  - The height of the wash basin is 80cm.
  - The wash basin tap type is sensor.
  - There is/are not chair(s) in the parent and baby room.
  - There is not a toilet in the parent and baby room.
  - There is not a flashing fire alarm beacon within the room.
  - The lighting levels are moderate to good.

# Accessible Toilet(s) (CBeebies Land - Big Fun Showtime - Right Transfer)

## Photos



1



2



3



4



5

- There is an/are accessible toilet(s) available.

## Location and Access

- This accessible toilet is located in the Big Fun Showtime area.
- There is step-free access into the accessible toilet.
- This is a shared toilet.
- A key is not required for the accessible toilet.
- There is pictorial and written text signage on or near the toilet door.
- The contrast between the external door and wall is good.
- The door opens outwards.
- The door is easy to open.
- The door is locked by a twist lock.
- The width of the accessible toilet opening is 88cm (2ft 11in).
- The contrast between the internal door and wall is good.
- The door has a horizontal grab rail.
- The contrast between the horizontal grab rail and internal door is poor.



## Toilet Features

- The dimensions of the accessible toilet are 134cm x 204cm (4ft 5in x 6ft 8in).
- The accessible toilet does not have an unobstructed minimum turning space of 150cm x 150cm.
- The lighting levels are moderate to good.
- There is a lateral transfer space.
- As you face the toilet pan the transfer space is on the right.
- The lateral transfer space is 77cm (2ft 6in).
- There is a flush on the transfer side.
- There is a spatula type lever flush.
- There is a dropdown rail on the transfer side.
- The contrast between the dropdown rail(s) and wall is good.
- There is a/are wall-mounted grab rail(s) available.
- As you face the toilet the wall-mounted grab rail(s) is/are on both sides.
- There is a vertical wall-mounted grab rail on the transfer side.
- There is a horizontal wall-mounted grab rail on the opposite side of the seat to the transfer space.
- The contrast between the wall-mounted grab rail(s) and wall is good.
- The contrast between the walls and floor is good.
- There is an emergency alarm.
- The emergency pull cord alarm is fully functional.
- There is not a red flashing fire alarm beacon within the toilet.
- Disposal facilities are available in the toilet.
- There is a/are sanitary and nappy/incontinence items bin disposal units.
- There is a/are coat hook(s).
- The height of the coat hook is 118cm from the floor.

## Additional Fixtures

- There is a mirror.
- The mirror is not placed at a lower level or at an angle for ease of use.
- There is not a shelf within the accessible toilet.
- The toilet has a cistern.
- There is a lid attached to the toilet seat.

- The height of the toilet seat above floor level is 48cm (1ft 7in).
- The toilet seat colour contrast is good.
- There is a toilet roll holder.
- The toilet roll holder can be reached from seated on the toilet.
- The toilet roll holder is not placed higher than 100cm (3ft 3in).
- The contrast between the toilet roll holder and the wall is poor.
- There is a wash basin.
- The wash basin and tap(s) can be reached from seated on the toilet.
- The wash basin is not placed higher than 74cm (2ft 5in).
- There are vertical wall-mounted grab rails on both sides of the wash basin.
- The contrast between the wash basin wall-mounted grab rail(s) and wall is good.
- The wash basin tap type is sensor.
- There is a wall fixed soap dispenser.
- The soap dispenser can be reached from seated on the toilet.
- The height of the soap dispenser is 100cm.
- There is not a towel dispenser.
- There is a hand dryer.
- The hand dryer is not placed higher than 100cm (3ft 3in).
- The contrast between the hand dryer and the wall is poor.

## Standard Toilet(s) (CBeebies Land - Big Fun Showtime)

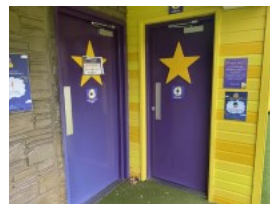
### Photos



1



2



3



4



5



6

- Standard toilet facilities are available.

### Toilet Facilities

- The female and male toilets are located in the Big Fun Showtime area.
- There is step-free access into the toilet(s).
- The colour contrast between the external toilet door(s) and wall(s) is good.
- There is pictorial and written text signage on or near the toilet door.
- An ambulant toilet cubicle is available.
- There are horizontal wall mounted rails available on both sides of the toilet.
- The ambulant toilet does not have vertical wall mounted grab rails.
- The height of the wash basin(s) is 86cm.
- The height of the lowered wash basin is 49cm.
- The wash basin(s) tap type is sensor.
- Lighting levels are moderate to good.

## Parent and Baby Room (CBeebies Land - Big Fun Showtime - Baby Change)

### Photos



1



2

- There is a parent and baby room for public use.
- The parent and baby room is located in the Big Fun Showtime area.
- There is step-free access into the parent and baby room.
- Staff do not need to be notified for use of the room.
- There is pictorial and written text signage on or near the parent and baby room door.
- The baby change table is not set against the wall, permanently fixed at 75cm from the floor.
- The baby change table is not height adjustable.
- The height of the baby change table once extended is 96cm (3ft 2in).
- There are disposal facilities in the parent and baby room.
- There is a wash basin in the parent and baby room.
- The height of the wash basin is 80cm.
- The wash basin tap type is sensor.
- There is/are not chair(s) in the parent and baby room.
- There is not a toilet in the parent and baby room.
- There is not a flashing fire alarm beacon within the room.
- The lighting levels are moderate to good.

## Parent and Baby Room (CBeebies Land - Big Fun Showtime - Adult and Baby Change)

### Photos



1



2



3



4

- 
- The parent and baby room is located in the Big Fun Showtime area.
  - There is step-free access into the parent and baby room.
  - Staff do not need to be notified for use of the room.
  - There is pictorial and written text signage on or near the parent and baby room door.
  - The baby change table is not set against the wall, permanently fixed at 75cm from the floor.
  - The baby change table is not height adjustable.

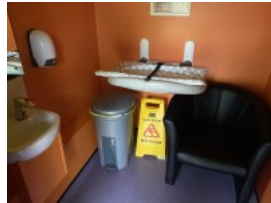
- The height of the baby change table once extended is 80cm (2ft 7in).
- There are not disposal facilities in the parent and baby room.
- There is a wash basin in the parent and baby room.
- The height of the wash basin is 80cm.
- The wash basin tap type is sensor.
- There is/are not chair(s) in the parent and baby room.
- There is not a toilet in the parent and baby room.
- There is not a flashing fire alarm beacon within the room.
- The lighting levels are moderate to good.

## Parent and Baby Room (CBeebies Land - Big Fun Showtime - Baby Feeding)

### Photos



1



2

- 
- The parent and baby room is located in the Big Fun Showtime area.
  - There is step-free access into the parent and baby room.
  - Staff do not need to be notified for use of the room.
  - There is pictorial and written text signage on or near the parent and baby room door.
  - The baby change table is not set against the wall, permanently fixed at 75cm from the floor.
  - The baby change table is not height adjustable.
  - The height of the baby change table once extended is 96cm (3ft 2in).
  - There are disposal facilities in the parent and baby room.
  - There is a wash basin in the parent and baby room.
  - The height of the wash basin is 80cm.
  - The wash basin tap type is sensor.
  - There is a/are chair(s) in the parent and baby room.
  - There is a chair with armrests on both sides.
  - There is not a toilet in the parent and baby room.

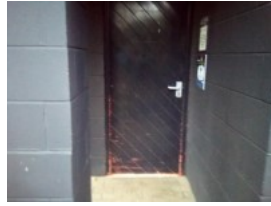
- There is not a flashing fire alarm beacon within the room.
- The lighting levels are moderate to good.

## Standard Toilet(s) (Outside X-Sector (Adventure Land))

### Photos



1



2



3



4



5



6



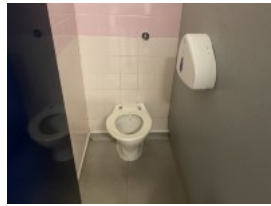
7



8



9



10



11



12



13



14

- Standard toilet facilities are available.

### Toilet Facilities

- The female and male toilets are located outside of X-Sector (Adventure Land), to the right of the X-Sector access point.
- There is ramped/sloped access into the toilet(s).
- The colour contrast between the external toilet door(s) and wall(s) is poor.
- There is pictorial and written text signage on or near the toilet door.
- An ambulant toilet cubicle is not available.
- The height of the wash basin(s) is 84cm.
- The wash basin(s) tap type is push.
- Lighting levels are good.

### Baby Changing Facilities

- Baby change facilities are available in both the female and male toilets.
- There is a fixed baby change table available.
- The height of the baby change table is 100cm.

## Accessible Toilet(s) (The Burger Kitchen - Towers Area - Right Hand Transfer)

### Photos



1



2



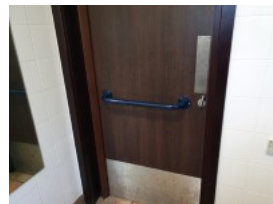
3



4



5



6

- There is an/are accessible toilet(s) available.

### Location and Access

- This accessible toilet is located at the rear of the restaurant, to the left of the service counter.
- This accessible toilet is approximately 45m (49yd 8in) from the main entrance.
- There is step-free access into the accessible toilet.
- This is a shared toilet.
- A key is not required for the accessible toilet.
- There is pictorial and written text signage on or near the toilet door.
- The contrast between the external door and wall is good.
- The door opens outwards.
- The door may be difficult to open.
- The door is locked by a twist lock.
- The width of the accessible toilet opening is 83cm (2ft 9in).
- The contrast between the internal door and wall is good.
- The door has a horizontal grab rail.
- The contrast between the horizontal grab rail and internal door is poor.

### **Toilet Features**

- The dimensions of the accessible toilet are 163cm x 213cm (5ft 4in x 6ft 12in).
- The accessible toilet does have an unobstructed minimum turning space of 150cm x 150cm.
- The lighting levels are good.
- There is a lateral transfer space.
- As you face the toilet pan the transfer space is on the right.
- The lateral transfer space is 95cm (3ft 1in).
- The transfer space is obstructed by a sanitary bin and a waste disposal bin.
- There is a flush on the transfer side.
- There is not a spatula type lever flush.
- There is a lever flush.
- There is a dropdown rail on the transfer side.
- The contrast between the dropdown rail(s) and wall is good.
- There is a/are wall-mounted grab rail(s) available.
- As you face the toilet the wall-mounted grab rail(s) is/are on both sides.
- There is a vertical wall-mounted grab rail on the transfer side.



- There is a horizontal wall-mounted grab rail on the opposite side of the seat to the transfer space.
- The contrast between the wall-mounted grab rail(s) and wall is good.
- The contrast between the walls and floor is good.
- There is an emergency alarm.
- The emergency pull cord alarm was out of reach (higher than 10cm (4") from floor) when surveyed.
- There is not a red flashing fire alarm beacon within the toilet.
- Disposal facilities are available in the toilet.
- There is a/are sanitary and general waste (with lid) disposal units.
- There is not a/are not coat hook(s).

### **Additional Fixtures**

- There is a mirror.
- The mirror is placed at a lower level or at an angle for ease of use.
- There is not a shelf within the accessible toilet.
- The toilet has a backrest.
- The height of the toilet seat above floor level is 48cm (1ft 7in).
- The toilet seat colour contrast is poor.
- There is a toilet roll holder.
- The toilet roll holder can be reached from seated on the toilet.
- The toilet roll holder is placed higher than 100cm (3ft 3in).
- The height of the toilet roll holder is 110cm (3ft 7in).
- The contrast between the toilet roll holder and the wall is poor.
- There is a wash basin.
- The wash basin and tap(s) can be reached from seated on the toilet.
- The wash basin is placed higher than 74cm (2ft 5in).
- The height of the wash basin is 77cm (2ft 6in).
- There are vertical wall-mounted grab rails on both sides of the wash basin.
- The contrast between the wash basin wall-mounted grab rail(s) and wall is good.
- The wash basin tap type is lever mixer.
- There is a wall fixed soap dispenser.
- The soap dispenser cannot be reached from seated on the toilet.
- The height of the soap dispenser is 108cm.

- There is not a towel dispenser.
- There is a hand dryer.
- The hand dryer is not placed higher than 100cm (3ft 3in).
- The contrast between the hand dryer and the wall is poor.

## Standard Toilet(s) (The Burger Kitchen - Towers Area)

### Photos



1



2



3



4



5



6



7



8



9

- Standard toilet facilities are available.

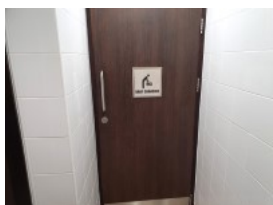
### Toilet Facilities

- The female and male toilets are located at the rear of the restaurant, to the left of the service counter.
- There is step-free access into the toilet(s).
- The standard toilet(s) is/are approximately 44m from the main entrance.

- The colour contrast between the external toilet door(s) and wall(s) is good.
- There is pictorial and written text signage on or near the toilet door.
- An ambulant toilet cubicle is not available.
- The height of the wash basin(s) is 90cm.
- The wash basin(s) tap type is twist/turn.
- Lighting levels are good.
- There is a second set of male and female standard toilets located to the right hand side of the services counter.

## Parent and Baby Room (The Burger Kitchen - Towers Area)

### Photos



1



2



3

- 
- There is a parent and baby room for public use.
  - The parent and baby room is located at the rear of the restaurant, to the left of the service counter.
  - The parent and baby room is approximately 44m from the main entrance.
  - There is step-free access into the parent and baby room.
  - Staff do not need to be notified for use of the room.
  - There is pictorial and written text signage on or near the parent and baby room door.
  - The baby change table is not set against the wall, permanently fixed at 75cm from the floor.
  - The baby change table is not height adjustable.
  - The height of the baby change table once extended is 100cm (3ft 3in).
  - There are disposal facilities in the parent and baby room.
  - There is a wash basin in the parent and baby room.
  - The height of the wash basin is 74cm.
  - The wash basin tap type is twist/turn.
  - There is/are not chair(s) in the parent and baby room.
  - There is not a toilet in the parent and baby room.

- There is a flashing fire alarm beacon within the room.
- The lighting levels are good.

## Accessible Toilet(s) (Forbidden Valley - Right Hand Transfer)

### Photos



1



2



3



4



5

- There is an/are accessible toilet(s) available.

### Location and Access

- This accessible toilet is located in Forbidden Valley, near to the Skyride.
- There is ramped/sloped access into the accessible toilet.
- This is a shared toilet.
- A key is not required for the accessible toilet.
- There is pictorial and written text signage on or near the toilet door.
- The contrast between the external door and wall is poor.
- The door opens outwards.
- The door may be difficult to open.
- The door is locked by a twist lock.
- The width of the accessible toilet opening is 85cm (2ft 9in).
- The contrast between the internal door and wall is good.
- The door has a horizontal grab rail.

- The contrast between the horizontal grab rail and internal door is good.

## **Toilet Features**

- The dimensions of the accessible toilet are 145cm x 260cm (4ft 9in x 8ft 6in).
- The accessible toilet does not have an unobstructed minimum turning space of 150cm x 150cm.
- The lighting levels are moderate to good.
- There is a lateral transfer space.
- As you face the toilet pan the transfer space is on the right.
- The lateral transfer space is 84cm (2ft 9in).
- The transfer space is obstructed by a waste disposal bin and storage items.
- There is a flush on the transfer side.
- There is not a spatula type lever flush.
- There is a lever flush.
- There is a dropdown rail on the transfer side.
- The contrast between the dropdown rail(s) and wall is good.
- There is a/are wall-mounted grab rail(s) available.
- As you face the toilet the wall-mounted grab rail(s) is/are on both sides.
- There is a vertical wall-mounted grab rail on the transfer side.
- There is a horizontal wall-mounted grab rail on the opposite side of the seat to the transfer space.
- The contrast between the wall-mounted grab rail(s) and wall is good.
- The contrast between the walls and floor is fair.
- There is an emergency alarm.
- The emergency pull cord alarm was out of reach (higher than 10cm (4") from floor) when surveyed.
- There is not a red flashing fire alarm beacon within the toilet.
- Disposal facilities are available in the toilet.
- There is a/are sanitary and general waste (with lid) disposal units.
- There is a/are coat hook(s).
- The height of the coat hook is 125cm from the floor.

## **Additional Fixtures**

- There is not a mirror.
- There is not a shelf within the accessible toilet.

- The toilet has a cistern.
- The height of the toilet seat above floor level is 48cm (1ft 7in).
- The toilet seat colour contrast is good.
- There is a toilet roll holder.
- The toilet roll holder can be reached from seated on the toilet.
- The toilet roll holder is not placed higher than 100cm (3ft 3in).
- The contrast between the toilet roll holder and the wall is poor.
- There is a wash basin.
- The wash basin and tap(s) can be reached from seated on the toilet.
- The wash basin is not placed higher than 74cm (2ft 5in).
- There are vertical wall-mounted grab rails on both sides of the wash basin.
- The contrast between the wash basin wall-mounted grab rail(s) and wall is good.
- The wash basin tap type is sensor.
- There is a wall fixed soap dispenser.
- The soap dispenser can be reached from seated on the toilet.
- The height of the soap dispenser is 86cm.
- There is not a towel dispenser.
- There is a hand dryer.
- The hand dryer is not placed higher than 100cm (3ft 3in).
- The contrast between the hand dryer and the wall is poor.

## Standard Toilet(s) (Forbidden Valley)

### Photos



1



2



3



4



5



6



7



8

- Standard toilet facilities are available.

### Toilet Facilities

- The female and male toilets are located in Forbidden Valley, near to the Skyride.
- There is ramped/sloped access into the toilet(s).
- The colour contrast between the external toilet door(s) and wall(s) is poor.
- There is pictorial and written text signage on or near the toilet door.
- An ambulant toilet cubicle is not available.
- The wash basin(s) tap type is push.
- Lighting levels are moderate to good.

## Parent and Baby Room (Forbidden Valley)

### Photos



1



2



3



4



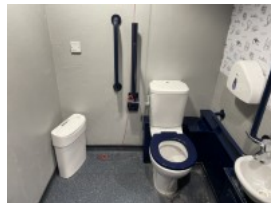
- The parent and baby room is located in Forbidden Valley, near to the Skyride.
- There is ramped/sloped access into the parent and baby room.
- Staff do not need to be notified for use of the room.
- There is written text signage on or near the parent and baby room door.
- The baby change table is not set against the wall, permanently fixed at 75cm from the floor.
- The baby change table is not height adjustable.
- The height of the baby change table once extended is 100cm (3ft 3in).
- There are disposal facilities in the parent and baby room.
- There is a wash basin in the parent and baby room.
- The height of the wash basin is 80cm.
- The wash basin tap type is push.
- There is a/aire chair(s) in the parent and baby room.
- There is a chair with armrests on both sides.
- There is not a toilet in the parent and baby room.
- There is not a flashing fire alarm beacon within the room.
- The lighting levels are moderate to good.

## Accessible Toilet(s) (Rollercoaster Restaurant - Left Hand Transfer)

### Photos



1



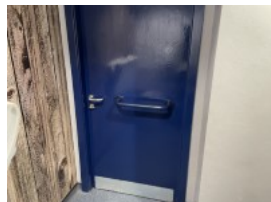
2



3



4





- There is an/are accessible toilet(s) available.

### Location and Access

- This accessible toilet is located to the right as you enter the main entrance.
- This accessible toilet is approximately 22m (24yd 2in) from the main entrance.
- There is step-free access into the accessible toilet.
- This is a shared toilet.
- A key is not required for the accessible toilet.
- There is pictorial and written text signage on or near the toilet door.
- The contrast between the external door and wall is good.
- The door opens outwards.
- The door is easy to open.
- The door is locked by a twist lock.
- The width of the accessible toilet opening is 88cm (2ft 11in).
- The contrast between the internal door and wall is good.
- The door has a horizontal grab rail.
- The contrast between the horizontal grab rail and internal door is poor.

### Toilet Features

- The dimensions of the accessible toilet are 222cm x 199cm (7ft 3in x 6ft 6in).
- The accessible toilet does not have an unobstructed minimum turning space of 150cm x 150cm.
- The lighting levels are good.
- There is a lateral transfer space.
- As you face the toilet pan the transfer space is on the left.
- The lateral transfer space is 85cm (2ft 9in).
- The transfer space is obstructed by a sanitary bin.
- There is a flush on the transfer side.
- There is a spatula type lever flush.
- There is a dropdown rail on the transfer side.
- The contrast between the dropdown rail(s) and wall is good.

- There is a/are wall-mounted grab rail(s) available.
- As you face the toilet the wall-mounted grab rail(s) is/are on both sides.
- There is a vertical wall-mounted grab rail on the transfer side.
- There is a horizontal wall-mounted grab rail on the opposite side of the seat to the transfer space.
- The contrast between the wall-mounted grab rail(s) and wall is good.
- The contrast between the walls and floor is good.
- There is an emergency alarm.
- The emergency pull cord alarm is fully functional.
- There is a red flashing fire alarm beacon within the toilet.
- Disposal facilities are available in the toilet.
- There is a/are sanitary and clinical waste disposal units.
- There is not a/are not coat hook(s).

#### **Additional Fixtures**

- There is a mirror.
- The mirror is not placed at a lower level or at an angle for ease of use.
- There is a shelf within the accessible toilet.
- The shelf has the minimum dimensions of 12.5cm x 40cm.
- The shelf is at a height of 48cm.
- The shelf is located where it is reachable.
- The toilet has a cistern.
- The height of the toilet seat above floor level is 48cm (1ft 7in).
- The toilet seat colour contrast is good.
- There is a toilet roll holder.
- The toilet roll holder can be reached from seated on the toilet.
- The toilet roll holder is not placed higher than 100cm (3ft 3in).
- The contrast between the toilet roll holder and the wall is poor.
- There is a wash basin.
- The wash basin and tap(s) can be reached from seated on the toilet.
- The wash basin is not placed higher than 74cm (2ft 5in).
- There are vertical wall-mounted grab rails on both sides of the wash basin.
- The contrast between the wash basin wall-mounted grab rail(s) and wall is good.

- The wash basin tap type is lever mixer.
- There is a wall fixed soap dispenser.
- The soap dispenser cannot be reached from seated on the toilet.
- The height of the soap dispenser is 90cm.
- There is not a towel dispenser.
- There is a hand dryer.
- The hand dryer is placed higher than 100cm (3ft 3in).
- The height of the hand dryer is 110cm (3ft 7in).
- The contrast between the hand dryer and the wall is poor.

### Baby Changing Facilities

- Baby changing facilities are located within the accessible toilet.
- There is a flip down baby change table available.
- The height of the baby change table is 87cm.

## Standard Toilet(s) (Rollercoaster Restaurant)

### Photos



1



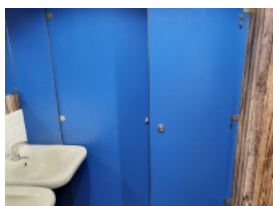
2



3



4



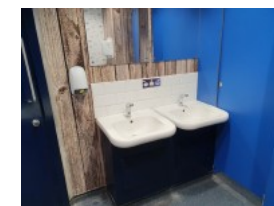
5



6



7



8

- Standard toilet facilities are available.

## Toilet Facilities

- The female and male toilets are located to the right as you enter the main entrance.
- There is step-free access into the toilet(s).
- The standard toilet(s) is/are approximately 22m from the main entrance.
- The colour contrast between the external toilet door(s) and wall(s) is good.
- There is pictorial and written text signage on or near the toilet door.
- An ambulant toilet cubicle is not available.
- The height of the wash basin(s) is 80cm.
- The wash basin(s) tap type is sensor.
- Lighting levels are good.