

Access Statement for the National Maritime Museum (Part 1)

Getting to the Museum:

Accessible travel and parking

Getting Around the Museum:

Lifts

Stairs

The National Maritime Museum

The National Maritime Museum is the world's largest maritime museum with 10 free galleries and a vast collection that spans artworks, maps and charts, memorabilia and thousands of other objects

Located on a UNESCO World Heritage Site the museum is in the centre of Maritime Greenwich and you can spend a whole day discovering the stories of exploration that shaped the world we live in today

Get up close to the actual uniform Admiral Nelson was wearing when he was fatally wounded at the Battle of Trafalgar, grab a selfie next to our collection of figureheads and smell the spices inside the Traders gallery

Planning your Visit

Accessible Bus Travel

Please check websites prior to visiting for up to date travel information

Frequent bus routes operate around Greenwich

The nearest bus stop is on Romney Road and comes up on the bus route as Stop G/Stop F: National Maritime Museum

Buses come regularly from:

Central London

188 – This bus stops at Surrey Quays, Canada Water, Elephant and Castle, Waterloo, Holborn, Russell Square, North Greenwich

East London

177 – This bus stops at Deptford Bridge, New Cross and Peckham

180 – This bus stops at Lewisham Station and Shopping Centre

North Greenwich (Emirates Cable Car and the O2 arena)

129, 188

Blackheath

286 – This bus stops at Blackheath, Eltham, Queen Mary's Hospital

386 – This bus stops at Blackheath

Additional help to plan a journey can be found at www.tfl.gov.uk

From the Romney Road bus stop it is 150 metres (0.09 miles) to the museum's Stanhope Entrance or 373 metres (0.23 miles) to the Sammy Ofer Wing Entrance next to Greenwich Park

Please be aware if coming via bus you will need to cross Romney Road to enter the museum

There is a pelican crossing 40 metres (0.02 miles) from the Museum Gates

If returning to Central London via bus there is a covered bus shelter with a small amount of seating

Accessible DLR travel

Please see Tube map on www.tfl.gov.uk for further information

The nearest station is Cutty Sark for Maritime Greenwich which is 500 metres (0.31 miles) away from the museum

Please be aware you will need to cross roads to get to the DLR station from the Museum

There are several pelican crossings in Greenwich town centre to facilitate crossing

Accessible Rail travel

The SouthEastern line has trains running approximately every 10 minutes to Charing Cross and London Cannon Street

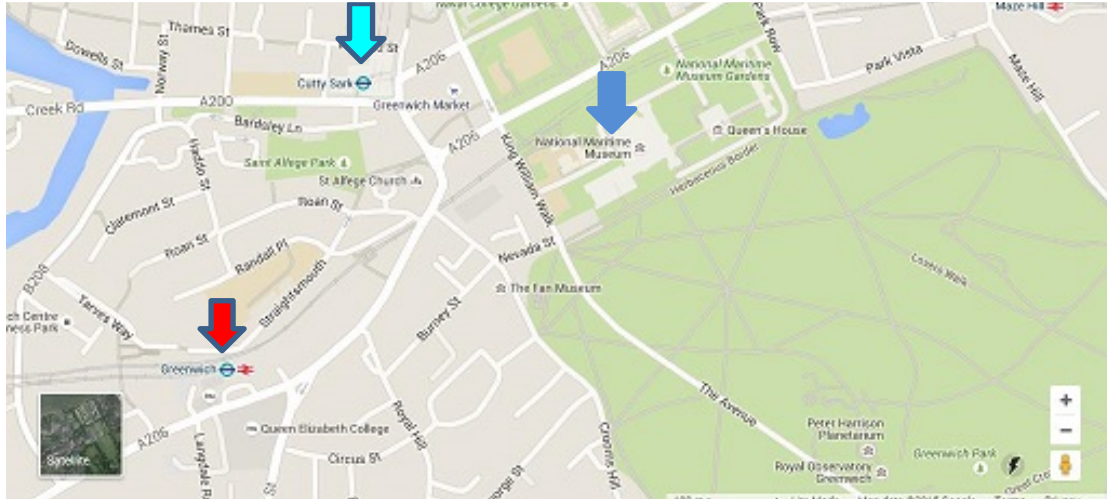
The line serves Maze Hill station which is 700 metres (0.43 miles) from the museum

For further Access information about Maze Hill please visit http://www.nationalrail.co.uk/stations_destinations/MZH.aspx

Greenwich Station in Greenwich town centre is 700 metres (0.43 miles) from the museum

For further access information about Greenwich station please visit http://www.nationalrail.co.uk/stations_destinations/GNW.aspx

Please be aware you will need to cross roads to get to the station(s) from the Museum



Clippers for Central London stop at:

Canary Wharf
London Bridge
Bankside
Blackfriars
Embankment
London Eye

Please see timetable for exact times at <http://www.thamesclippers.com/>

For a more leisurely view of the Thames, City Cruises leave from Greenwich Pier approximately every 30 minutes from 10.00–17.40

Please see <http://www.citycruises.com/> for more information

When coming from the pier the route is mainly pedestrianised but there is one road (Romney Road) to cross before getting to the museum

There is a pelican crossing 40 metres (0.02 miles) from the Museum Gates

Accessible Bicycle Travel

The National Maritime Museum is situated on Romney Road, postcode SE10 9NF

Bike racks can be found on the North side by the Stanhope Entrance and in the Car Park (see Car Park section below for directions)

Accessible Car Travel

The National Maritime Museum is situated on Romney Road, postcode SE10 9NF

Car Park

The car park is open to the general public at weekends but Blue Badge holders may use the designated parking bays on any day of the week

Limited pre-booked spaces are available

Parking is free for Blue Badge holders. Please call our switchboard on 0208 858 4422 or e-mail bookings@rmg.co.uk to book

If you do not have a Blue Badge and wish to park on the weekends the prices are:

Up to 1 hour – £3

Up to 2 hours – £6

Up to 3 hours – £9

Up to 4 hours – £12

All day – £15

Please note the metres take cash only

If metres are unavailable there is also the option to pay via any of the admissions desks in the Museum

The car park is open air

The car park is on Park Row within the grounds of the museum, postcode SE10 9NF

There are 6 designated Blue Badge parking bay(s) within the car park

The dimensions of the designated parking bay(s) are 235cm x 490cm

The nearest designated bay is 150 metres (0.09 miles) from the Romney Road Entrance of the National Maritime Museum

The route from the car park to the entrance is accessible to a wheelchair user

The car park is tarmac leading onto a gritted non-slip surface

There are no roads to cross once inside the car park

The car park does not have a height restriction barrier

Entrance to the National Maritime Museum

The Museum has two entrances: one at Romney Road commonly known as the Stanhope Entrance and one on King William walk leading into the park, called the Sammy Ofer Wing Entrance

Stanhope Entrance



Image 1: Entrance at Stanhope

Stanhope Entrance has step free access and automatic entrance doors

The doorway measures 1m 65cm in width

The flooring at Stanhope Entrance is large scale tiling with a non-slip surface

The lighting at Stanhope is dim blue ultraviolet spotlights

This leads into the ticket area which has brighter white spotlights

The Ticket desk at the Stanhope Entrance is 1m 8cm high

There is an audio on a loop of wave noises as you enter the Stanhope Entrance

There are 5 display screens above the ticket desk

A Fixed Induction loop is located on the ticket desk



Image 2: Stanhope Ticket desk

Sammy Ofer Wing Entrance

Please note there is a moderate slope down to the Sammy Ofer Wing Entrance



Image 3: Level change before reaching Sammy Ofer Wing Entrance

Sammy Ofer Wing Entrance has step free access and automatic entrance doors

The surface before entering is a combination of gritted, non-slip and concrete



Image 4: Entrance at the Sammy Ofer Wing

The doorway measures 1m 60cm in width at the Sammy Ofer Wing

The flooring at the Sammy Ofer Wing Entrance is smooth, non-slip flooring

The lighting at the Sammy Ofer Wing Entrance is bright and is provided by natural light and spotlights

There are 5 display screens above the ticket desk.

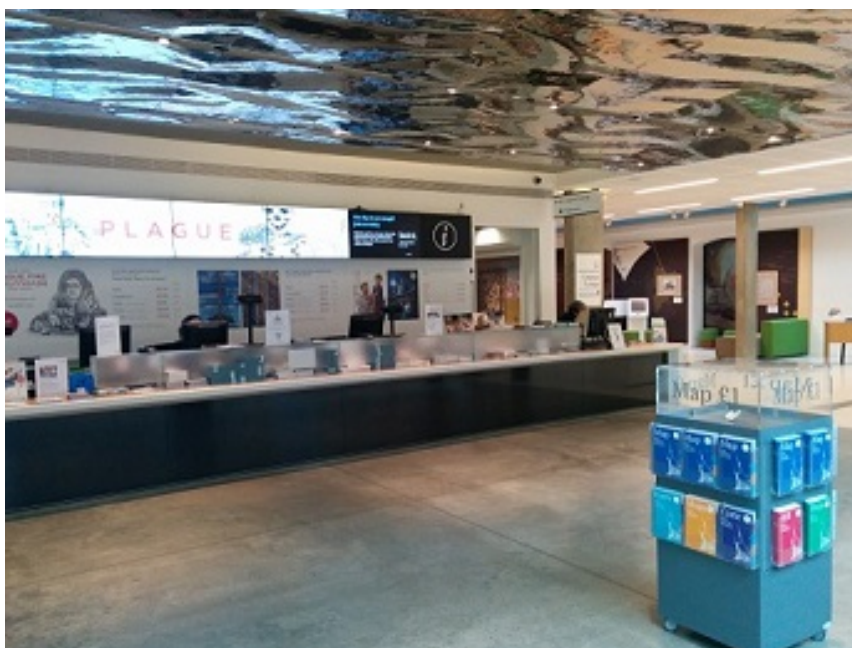


Image 5: Sammy Ofer Wing Admissions Area

The Ticket desk at the Sammy Ofer Wing is 1m 10cm high

The Information desk in the Sammy Ofer Wing is 78cm high

A Fixed Induction loop is located on the ticket desk

Wall mounted maps are available at both entrances for wayfinding and there are also personal Visitor Maps available for a £1 donation

Concessionary tickets

The Museum and the permanent galleries are free to enter but we have Special Exhibitions which are ticketed

To be eligible for the concessionary ticket rate, you must be 60 or over, a full time student or in receipt of Disability Living Allowance or Personal Independence Payment

Please note that the National Maritime Museum reserves the right to ask for evidence of status or receipt of benefits before issuing any such concessionary tickets

Evidence could be proof of age documentation, valid student ID or official document showing benefit receipt

Personal Assistants and Carers

We will permit one personal assistant or carer free entry into any special exhibitions which require a paid ticket to accompany those in receipt of Disability Living Allowance or Personal Independence Payment

We welcome Assistance Dogs

Additional Resources

We have a variety of resources available for visitors to use during their visit. Please ask at the ticket desks or a member of staff for assistance

Resources include:

Wheelchairs** – to book in advance please call 0208 858 4422

***please note:** these wheelchairs cannot leave the Museum, for example to take someone to the Royal Observatory

Wheelchairs can be hired from the Discover Greenwich centre for a small deposit which can be taken outside and around Greenwich

*Assistance is not provided with a wheelchair

Portable stools – these are available throughout the museum on the wall and standing racks in the galleries and open spaces and do not need to be booked in advance

A member of staff will be happy to assist you in finding one

Getting Around the Museum

Lifts

The building has accessible lifts to every floor

There are 3 lifts to reach the first and second floor and 1 lift to reach the Special Exhibition gallery in the Sammy Ofer Wing

Outside the Museum there is a platform lift to access the colonnades



Image 6: National Maritime Museum External Platform Lift

This lift has tactile buttons

The door to exit the lift is on the left as you enter the lift

The Sammy Ofer Wing Link lift

The Link lift is located in the blue 'link' corridor between the main museum and the new Sammy Ofer Wing



Image 7: The Sammy Ofer Wing Link Lift

It can be used to reach Level 1 and 2 and is especially useful for the Traders, Atlantic Worlds, Forgotten Fighters and Nelson, Navy, Nation and the Caird Library

The door opening is 1m 22cm wide

The interior dimensions are 2m 65cm long by 1m 60cm wide

There is no mirror to aid reversing in a wheelchair

The buttons are tactile

There is a floor number display

There is a beeping noise to indicate the lift reaching a floor level and the lift door opening

The entry and exit doors are the same (unless using the mezzanine level for access to the Caird Library where the doors open at the opposite end to entering)

The Stanhope lift

The Stanhope lift is the nearest lift to the Stanhope Entrance on Romney Road

To access the lift – On entering the Stanhope Entrance, turn left and after the large ship model in the case and then turn down the corridor on the left



Image 8: Corridor leading to the Stanhope Lift

The lift can reach Level 1 and 2 and is especially useful for the Great Map, Member's Room and Ship Simulator

It is next to the Stanhope stairs

This lift is made of see-through glass

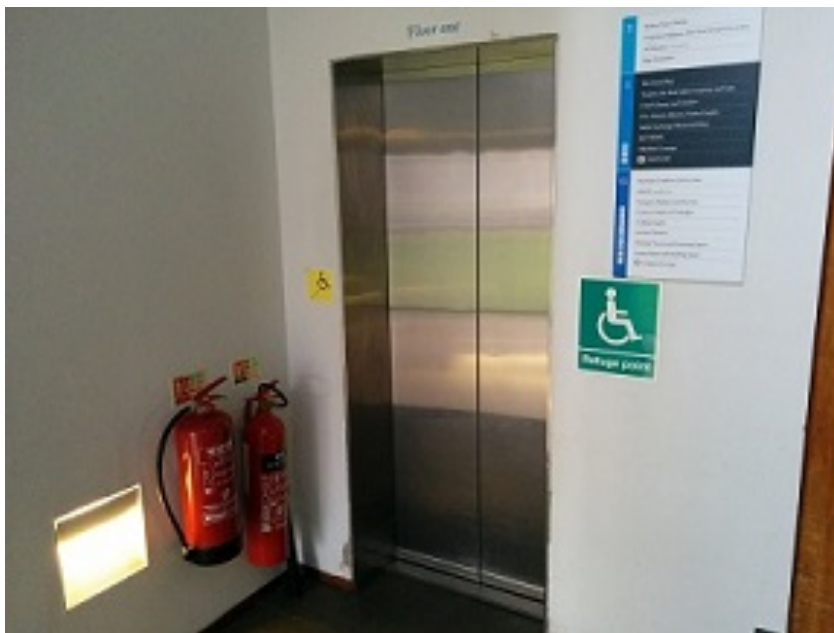


Image 9: The Stanhope lift

The door opening is 83cm wide

The interior dimensions are 1m 90cm long by 1m 40cm wide

There is no mirror to aid reversing in a wheelchair

The buttons are tactile

There is a floor number display

The entry and exit doors are the same

The Lewin lift

The Lewin lift is located next to the Lewin staircase

It can be used to reach Level 1 and 2 and is especially useful for the Re-Think Space and Baltic Glass display, the Great Map, Atlantic Worlds and Nelson, Navy, Nation galleries

The lift is located through the archway next to the large figurehead display on Level 0



Image 10: Direction to Lewin lift and Stairs

This lift is made of see-through glass



Image 11: The Lewin lift

The door opening is 83cm wide

The interior dimensions are 2m long by 1m 34cm wide

There is no mirror to aid reversing in a wheelchair

The buttons are tactile

There is a floor number display

There is an audio floor number indicator

The entry and exit doors are both in front and behind depending on which floor you enter and leave

The Special Exhibition Gallery lift

The Special Exhibition Gallery lift is used only to reach the Special Exhibitions Gallery on Level -1 in the Sammy Ofer Wing

It can be used in an evacuation with the aid of a trained member of staff

This lift is made of see-through glass



Image 12: The Special Exhibition Gallery lift

The door opening is 1m 29cm wide

The interior dimensions are 2m 75cm long by 1m 58cm wide

The buttons are tactile

There is a floor number display

Floor numbers and door opening/closing are announced by an automated voice system

The entry and exit doors are at opposite ends of the lift

The Brasserie lift

This lift is to reach the Brasserie only, which is located above the Sammy Ofer Wing

This lift is located down the corridor next to the Sammy Ofer Wing Ticket desk

The door opening is 88cm wide

The interior dimensions are 1m 40cm long by 1m 8cm wide

The buttons are tactile

There is a floor number display

Floor numbers and door opening/closing are announced by an automated voice system

The entry and exit doors are the same

There is a mirror to aid reversing in a wheelchair

Stairs

There are 7 staircases in the museum

The Stanhope stairs

These stairs are the nearest stairs to the Stanhope Entrance on Romney Road

To access the stairs – On entering the Stanhope Entrance turn left past the large ship model in the case and then turn down the corridor on the left (See directions for Stanhope lift)

They can be used to reach Level 1 and 2 and are especially useful for the Great Map, Member's Room and Ship Simulator

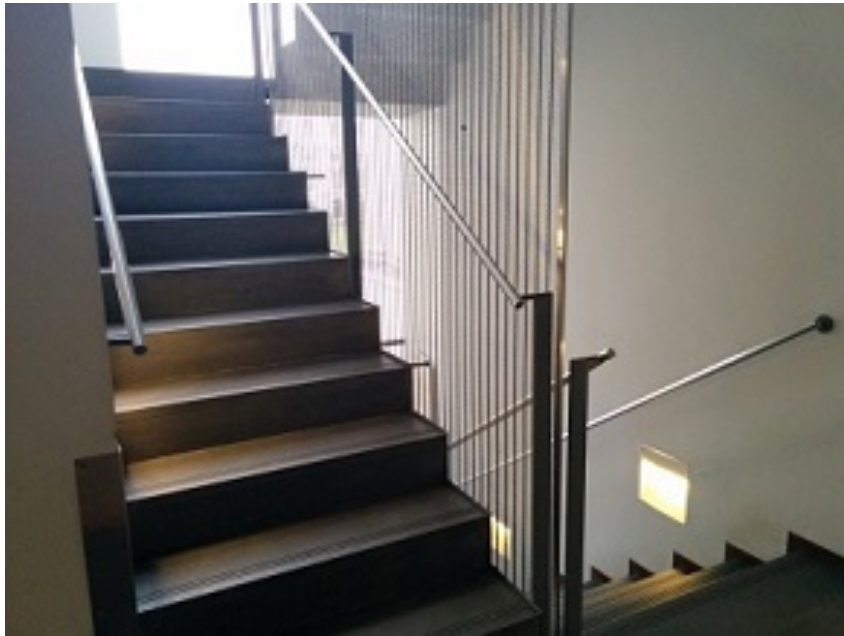


Image 13: The Stanhope staircase

The stairs have closed steps.

The steps are 20cm high and 30cm deep

There are landing areas which could be used as rest areas if needed

There are 44 steps in total

The Lewin stairs

The stairs located through the archway next to the large figurehead display on Level 0 (See directions for the Lewin Lift)

They can be used to reach Level 1 and 2 and are especially useful for the Re-Think Space and Baltic Glass display, the Great Map, Atlantic Worlds and Nelson, Navy, Nation galleries



Image 14: The Lewin staircase

The stairs have closed steps

The stairs are 18cm high and 30cm deep

There are 51 steps in total

The Caird Library stairs

These stairs are located next to the Voyagers gallery in the Sammy Ofer Wing

They can be used to reach the Caird Library on Level 1

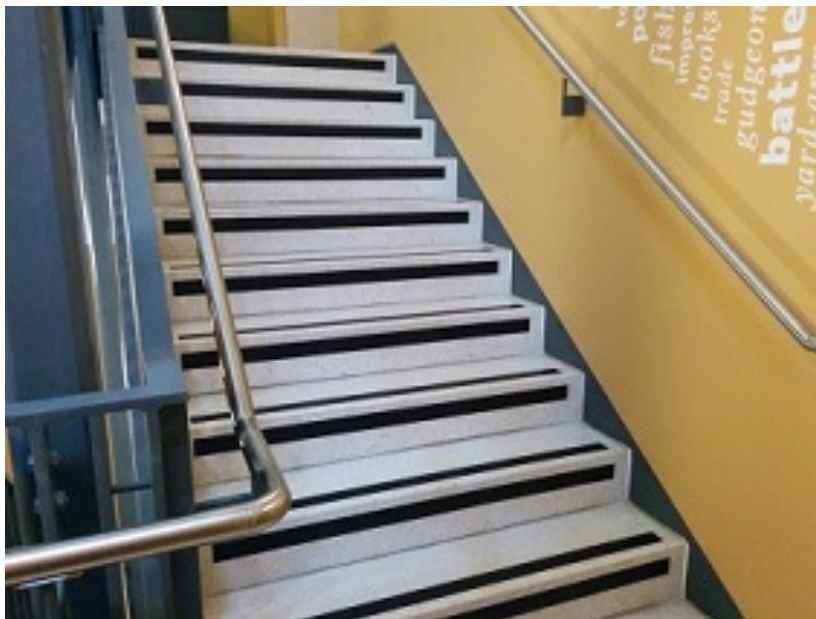


Image 15: The Caird Library stairs

The stairs have closed steps

The stairs are 18cm high and 20cm deep

There are 23 steps in total

The Link stairs

It is possible to get from the Library on Level 1 to the Atlantic Worlds, Traders and Nelson, Navy, Nation galleries

The door on the left as you come up the Library stairs leads to a small rest area with a bench

There are then 3 steps to get the Atlantic Worlds and Traders galleries

These steps are 18cm high and 26cm deep

From this level there is another staircase to get to Level 2 and the Nelson, Navy, Nation and Forgotten Fighters galleries

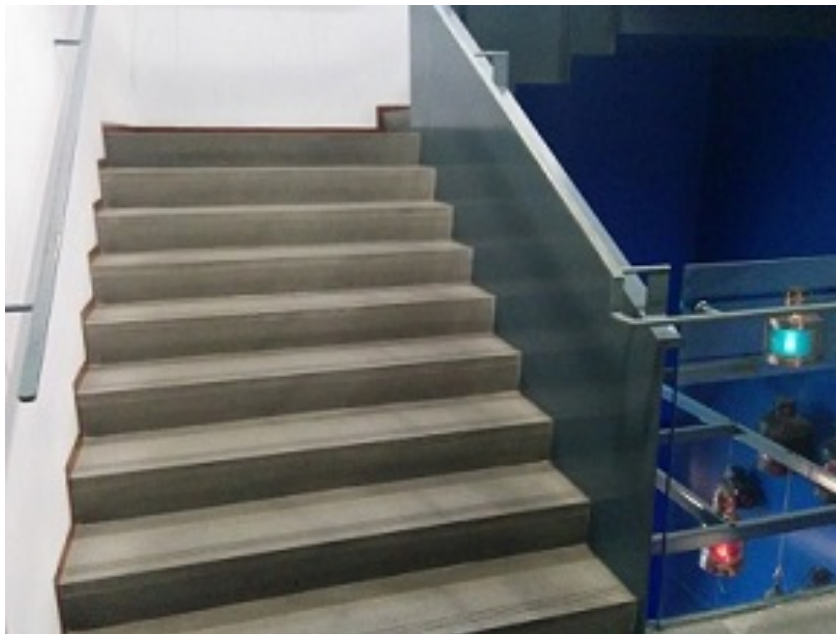


Image 16: The Link stairs

These stairs are 18cm high and 26cm deep

There are 21 steps in total

The stairs have closed steps

Special Exhibition Gallery stairs

These stairs are for accessing the Special Exhibition Gallery on Level -1 only

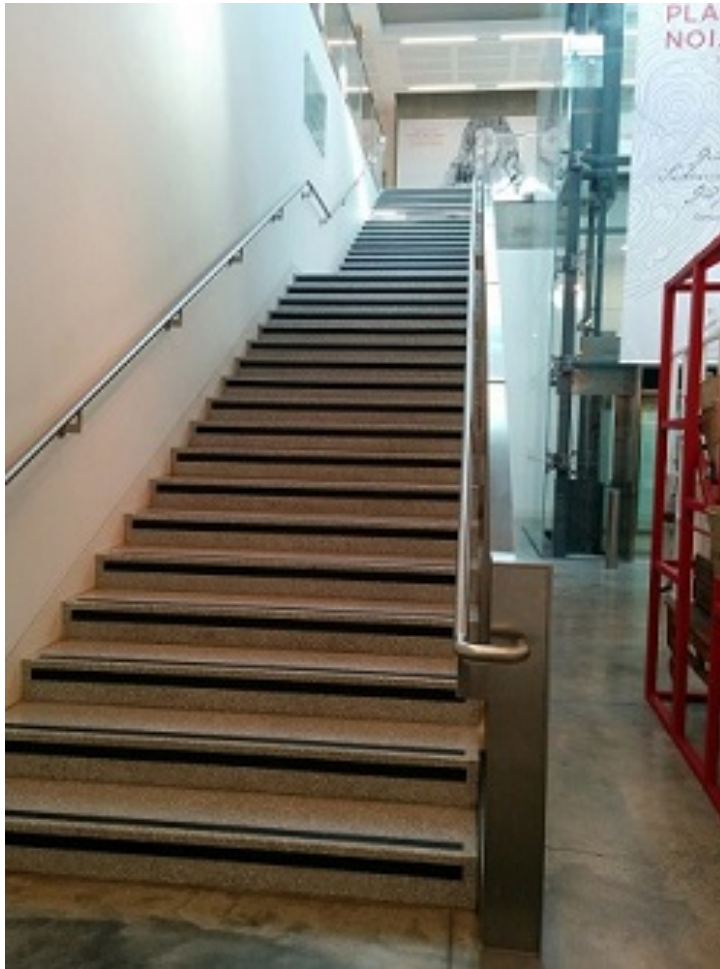


Image 17: The Special Exhibition Gallery staircase

The stairs lead down from the Sammy Ofer Wing to the Exhibition shop and gallery

They are next to the lift

The steps are 17cm high and 34cm deep

There are 36 steps in total

The stairs have closed steps

The Great Map stairs

There are two staircases leading directly to the Great Map from Level 0

There is one just past the silver Miss Britain speedboat and one opposite the small model of a lighthouse on the other side of the map



Image 18: The Great Map stairs

The stairs can be used to reach the Great Map on Level 1 and the Neptune Café

The steps are 18cm high and 26cm deep

There are 23 steps in total

These stairs have closed steps

The Brasserie stairs

These are stairs to reach the Brasserie restaurant only, which is located on top of the Sammy Ofer Wing

The stairs are located down a corridor next to the Sammy Ofer Wing Ticket Desk

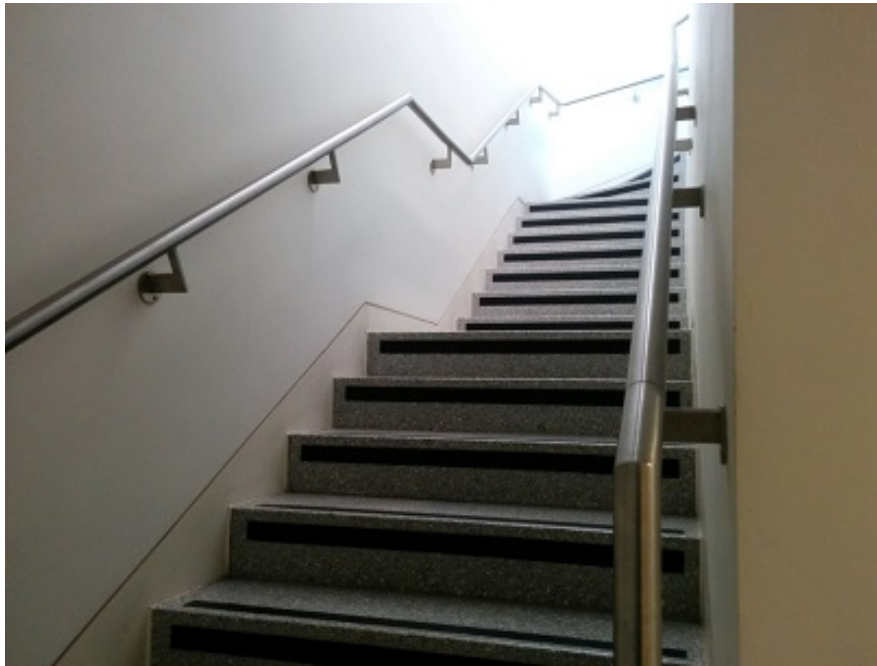


Image 19: The Brasserie Stairs

The steps are 17cm high and 32cm deep

There are 23 steps in total

The stairs have closed steps

Future Plans

Please let us know if you have any suggestions for future improvement of our Access Statement or our facilities by filling in our Visitor Survey [here](#) or calling us on 0208 858 4422 or speaking to a member of staff when you are on site

Contact Information

Address: National Maritime Museum, Greenwich, London SE10 9NF

Museum switchboard (general enquiries): +44 (0)20 8858 4422

For more information about:

Museum Spaces

Toilets

Café

Shop

Please see Part 2